

## DESIGN FEATURES:

- Steam rating:150 psi WSP
- ISO 5211 Actuator Mounting Pad
- Blow-out-proof stem de sign
- Anti - Static Device
- Body: ASTM A351 Gr.CF8M
- Ball: SS316
- Stem: SS316
- ME-PTFE SEAL KITS :REPLACES PTFE ,RPTFE AND FPA  
LOW DEFORMATION UNDER LOAD  
LOW PERMEATION
- Temperature Rating :-45.5 °C (-50 °F) to 246 °C (475 °F)
- Face to Face: ANSI B16.10
- Flange Dimensions: ANSI B16.5 150 #
- TEST STANDARD:API 598
- Vacuum Service to 29" Hg

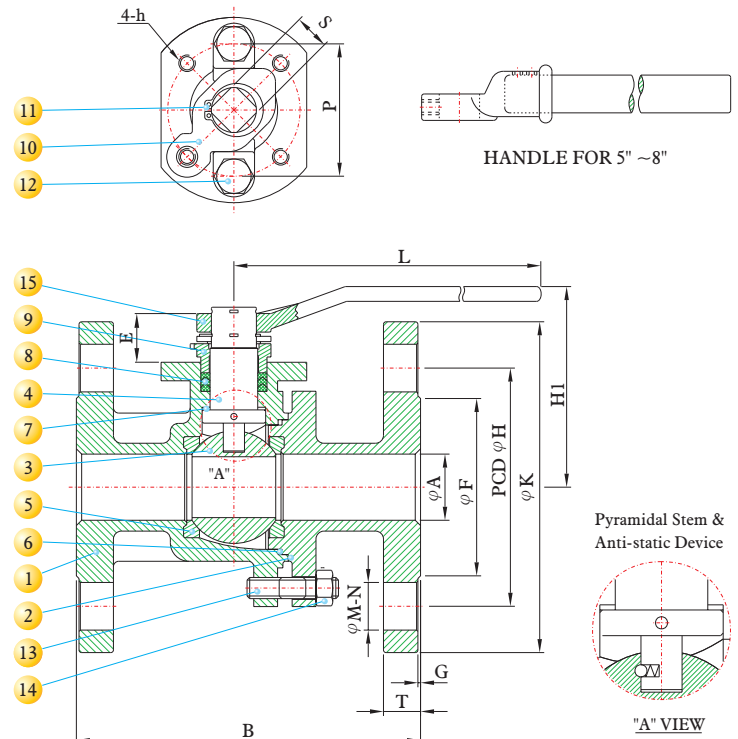
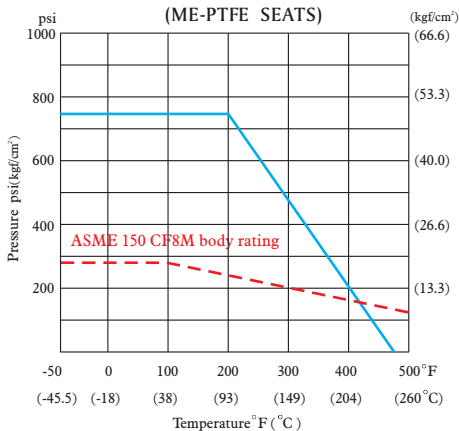


## MATERIALS LIST

NO.	PART NAME	MATERIAL	Q'TY
1	BODY	ASTM A351 Gr.CF8M	1
2	CAP	ASTM A351 Gr.CF8M	1
3	BALL	ASTM A351 Gr.CF8M	1
4	STEM	ASTM A276 Gr.316	1
5	SEAT	ME-PTFE	2
6	GASKET	ME-PTFE	1
7	THRUST WASHER	ME-PTFE	1
8	PACKING	ME-PTFE	1
9	GLAND	ASTM A351 Gr.CF8	1
10	STOPPER	SS304	1
11	SNAP RING	SS304	2
12	GLAND BOLT	ASTM A193 Gr.B8	2
13	STUD BOLT	ASTM A193 Gr.B8	4~12
14	SET NUT	ASTM A194 Gr.8M	4~12
15	HANDLE	ASTM A536 Gr.B 65-45-12	1

ME-PTFE IS Molecularly Enhanced PTFE

## PRESSURE TEMPERATURE RATINGS



## DIMENSIONS

SIZE		A		B		E		F		G		H		K		T		M		N	P		S		L		HI		h	Cv Factor	Weight	
inch	mm	inch	mm	inch	mm	inch	mm	inch	mm	inch	mm	inch	mm	inch	mm	inch	mm	inch	mm		inch	mm	inch	mm	inch	mm	inch	mm			Kg	Lb
1/2"	15	0.59	15.0	4.25	107.9	0.98	25.0	1.38	35.0	0.06	1.6	2.38	60.4	3.50	88.9	0.44	11.2	0.62	15.7	4	1.65	42	0.43	11	5.18	131.5	2.91	73.8	M5*P0.8	26	2.00	4.41
3/4"	20	0.79	20.0	4.62	117.3	1.02	26.0	1.69	42.9	0.06	1.6	2.75	69.8	3.88	98.5	0.44	11.2	0.62	15.7	4	1.65	42	0.43	11	5.18	131.5	2.94	74.8	M5*P0.8	55	2.50	5.51
1"	25	0.98	25.0	5.00	127.0	1.24	31.5	2.00	50.8	0.06	1.6	3.12	79.2	4.25	107.9	0.44	11.2	0.62	15.7	4	1.97	50	0.55	14	6.42	163.0	3.44	87.4	M6*P1.0	110	3.00	6.61
1 1/4"	32	1.26	32.0	5.50	139.7	1.24	31.5	2.50	63.5	0.06	1.6	3.50	88.9	4.62	117.3	0.50	12.7	0.62	15.7	4	1.97	50	0.55	14	6.42	163.0	3.63	92.2	M6*P1.0	180	4.50	9.91
1 1/2"	40	1.50	38.0	6.50	165.1	1.65	42.0	2.88	73.1	0.06	1.6	3.88	98.5	5.00	127.0	0.56	14.2	0.62	15.7	4	2.76	70	0.67	17	9.13	232.0	4.76	121.0	M8*P1.25	270	6.00	13.22
2"	50	1.97	50.0	7.00	177.8	1.65	42.0	3.62	91.9	0.06	1.6	4.75	120.6	6.00	152.4	0.62	15.7	0.75	19.0	4	2.76	70	0.67	17	9.13	232.0	5.08	129.0	M8*P1.25	500	8.50	18.72
2 1/2"	65	2.56	65.0	7.50	190.5	1.65	42.0	4.12	104.6	0.06	1.6	5.50	139.7	7.00	177.8	0.69	17.5	0.75	19.0	4	2.76	70	0.67	17	9.13	232.0	5.55	141.0	M8*P1.25	800	13.00	28.63
3"	80	3.15	80.0	8.00	203.2	2.20	56.0	5.00	127.0	0.06	1.6	6.00	152.4	7.50	190.5	0.75	19.0	0.75	19.0	4	4.02	102	0.87	22	12.87	327.0	6.52	165.7	M10*P1.5	1150	18.00	39.65
4"	100	3.94	100.0	9.00	228.6	2.20	56.0	6.19	157.2	0.06	1.6	7.50	190.5	9.00	228.6	0.94	23.8	0.75	19.0	8	4.02	102	0.87	22	12.87	327.0	7.11	180.7	M10*P1.5	2120	28.00	61.67
6"	150	5.91	150.0	15.50	393.7	2.64	67.0	8.50	215.9	0.06	1.6	9.50	241.3	11.00	279.4	1.00	25.4	0.88	22.3	8	4.92	125	1.06	27	42.20	1072.0	9.95	252.8	M12*P1.75	5100	75.00	165.20
8"	200	7.87	200.0	18.00	457.2	2.62	66.5	10.62	269.7	0.06	1.6	11.75	298.4	13.50	342.9	1.12	28.4	0.88	22.3	8	5.51	140	1.30	33	42.52	1080.0	11.73	297.9	M16*P2.0	9400	110.00	242.29